



Product Catalogue

Instruments Accessories Upgrades Spares Servicing



www.eatechnology.com

Australia | China | Europe | Singapore | UAE | USA

Safer, Stronger,
Smarter Networks

Who we are

EA Technology is a global, independent provider of end-to-end power engineering solutions, supporting customers in managing and operating electrical assets more efficiently, reliably and safely at lower cost.

Recognised as a world-leading expert in its field, EA Technology works collaboratively with partners across the energy, utilities, infrastructure and associated sectors to develop, manufacture and supply, award winning, innovative instruments.

EA Technology products are designed to help engineers maintain assets more effectively, by enabling them to understand the condition of plant.

We continue to lead the development of new products and services for preventing outages and assessing the condition of distribution voltage assets, building on nearly 50 years of experience and innovation. For example, our UltraTEV range of instruments includes the most versatile and powerful instruments available for detecting, locating, measuring, recording, monitoring and analysing Partial Discharge (PD) activity.



EA Technology's UltraTEV instruments won the Queen's Award for continuous innovation over 5 years.

Contents page

Partial Discharge (PD) Instruments	6 – 25
Cable Instruments	26 – 27
Field Instruments	28 – 33
Calibration and Repair	34
Services and Analytical Catalogue	35
Where to buy	38 – 39

If you would like more information on the application of any of the instruments you find in our catalogue please call our sales team.

Instrument sales:

☎ +44 (0)151 347 2367/2313

✉ sales@eatechnology.com

Instrument product support:

☎ +44 (0)151 347 2293

✉ product-support@eatechnology.com

Contact details

Head Office & European Enquiries

EA Technology
Capenhurst Technology Park
Chester CH1 6ES
United Kingdom

t +44 (0) 151 339 4181
f +44 (0) 151 347 2404

International Offices

US Office

Bill Higinbotham
EA Technology LLC
400 Morris Avenue, Suite 240
Denville, NJ 07834

t +1 (862) 261-2759
e bill.higinbotham@eatechnologyusa.com

Middle East Office

Alan Preece, Manager
EA Technology Abu Dhabi
P.O. Box 46153
Abu Dhabi, UAE

t +971 (2) 6503629
f +971 (2) 6503629
m +971 50 2209162
e alan.preece@eatechnology.com

Australia Office

Neil Davies, Director
EA Technology Australia
7/34 Commercial Road
Newstead QLD 4006

Mail address: PO Box 2086
Fortitude Valley BC QLD 4006

t +61 (0)7 3257 3096
f +61 (0)7 3257 3098
e neil.davies@eatechnology.com.au

China Office

Dr Yuan Tian, General Manager
EA Technology China
20/F Mirae Asset Tower
166 Lujiazui Ring Road
Pudong
Shanghai 200120, China

t +86 (0)21 5174 8848
f +86 (0)21 5174 8777
e chinaoffice@eatechnology.com

Singapore Office

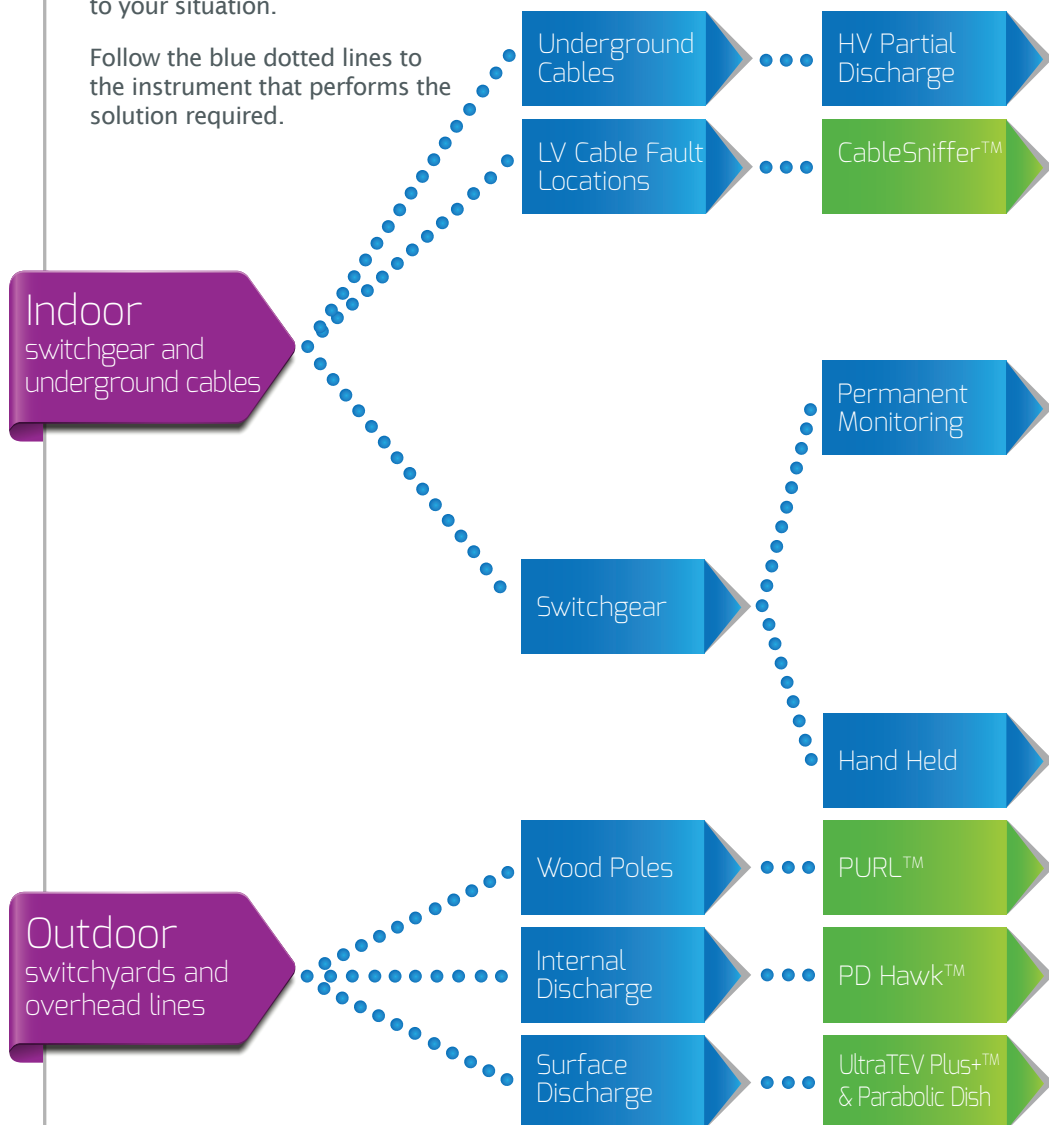
Victor Chan, Managing Director
EA Technology Asset Management Pte Ltd
8 Ubi Rd 2, Zervex, #03-08
Singapore 408538

t +65 6634 3591
m +65 9438 1061
f +65 6634 3590
e Victor.Chan@eatechnology.sg

Our range of instruments

Use our instrument diagram to identify the instrument best suited to your situation.

Follow the blue dotted lines to the instrument that performs the solution required.





Unsure of your needs at this stage?
Call us on: +44 (0)151 347 2293



UltraTEV Detector™

Product Code: UT2

The world's first dual sensor handheld partial discharge detection instrument is a global best seller, which is in service from Houston to Hong Kong.

Benefits

- Highly effective in 'first pass' asset condition surveys
- Very low training requirement
- Essential personal safety device
- Low cost, high productivity



Features

- Ultrasonic and TEV detectors in a single handheld unit
- Calibrated to detect critical PD activity instantly
- One button operation
- Light, portable and easily deployed



Accessories and options



UltraTEV
Calibration Checker™



UltraTEV Case



In-Car Charger



Function Checker™



Rubber Sleeve



Battery Charger

model	description	product code
UltraTEV Calibration Checker™	Save time and money with this handy unit. It instantly checks whether your UltraTEV Detectors™ are correctly calibrated – so they only need sending to us for adjustment when necessary. The UltraTEV Calibration Checker™ itself only needs calibrating after 12 months	UTCC
UltraTEV Case	Dedicated carry case for the UltraTEV Detector™	UT2-CAS
In-Car Charger	12V battery charger for the UltraTEV Detector™	UT2-CC
Function Checker™	Instantly checks whether your UltraTEV Detector™ is functioning correctly	FC1
Rubber Sleeve	Outer casing for the UltraTEV Detector™	UT2-RS
Battery Charger	Mains battery charger for the UltraTEV Detector™. Note: all mains-powered instruments are available with plugs to suit local requirements	UT2-BC
service packs	includes	
UltraTEV Service Pack 1 Add-on for UltraTEV Detector™ and UltraTEV Plus+™	<ul style="list-style-type: none"> ■ Benchmark PD Survey ■ On-site training in use of UltraTEV Detector™ or UltraTEV Plus+™ ■ 12 month technical support ■ FREE instrument calibration after 12 months 	



UltraTEV Plus+™

Product Code: UTP1

Multi-functional Partial Discharge (PD) investigator

Benefits

- Measures accurate data on PD activity
- Works with many different types of assets
- Highly user friendly with little training required
- Low ownership cost - one instrument replaces several
- Excellent value and return on investment

Features

- Detects and measures PD activity as numerical values for both ultrasonic and TEV emissions
- Menu-driven backlit colour screen and keypad, with multiple functions
- Locate and listen to ultrasonic PD activity with headphones included
- Switchable modes: one-shot PD detection or continuous measurement



Kit 1: Inc. Function Checker, Clip-on Headphones, Battery Charger and Systainer Carrying Case with high density foam insert
Product Code: UTP1 Kit 1



Kit 2: Inc. Peltor Neckband Headset, Ultrasonic Contact Probe, Flexible Sensor, Function Checker, Battery Charger and Systainer Carrying Case with high density foam insert
Product Code: UTP1 Kit 2



Kit 3: Inc. Peltor Neckband Headset, Ultrasonic Contact Probe, Flexible Sensor, UltraDish, Function Checker, Battery Charger and Systainer Carrying Case with high density foam insert
Product Code: UTP1 Kit 3



Accessories and options



model	description	product code
UltraDish™	The UltraDish™ is ideal for investigating PD activity in overhead assets or at a distance. Includes carrying case	UD1
UltraTEV Plus+ Case	Available for Kit 1, Kit 2 and Kit 3	UTP1-CAS
Peltor Neckband Headset	Medium attenuation, low-profile shells for easy and comfortable use together with other PPE devices	PNH
Flexible Sensor	Plug-in flexible microphone extension enables you to probe enclosures and tight spaces	FS1
Function Checker™	Instantly checks whether your UltraTEV Plus+™ is functioning correctly	FC1
Ultrasonic Contact Probe	Detects surface discharge activity in sealed chambers	UCP1
Battery Charger	Mains battery charger for the UltraTEV Plus+™. Note: all mains-powered instruments are available with plugs to suit local requirements	UTP1-BC

service packs	includes
UltraTEV Plus+ Service Pack 1 Add-on for UltraTEV Detector™ and UltraTEV Plus+™	<ul style="list-style-type: none"> ■ Benchmark PD Survey ■ On-site training in use of UltraTEV Detector™ or UltraTEV Plus+™ ■ 12 month technical support ■ FREE instrument calibration after 12 months



UltraTEV Locator™

Product Code: UTL1

Portable Partial Discharge (PD) investigation system.

Benefits

- Locating and measuring PD activity to identify faults BEFORE they lead to failures
- Recording and analysing PD activity to provide valuable information on the actual condition of assets
- More effective asset management, reliability, efficiency and safety, at lower cost

Features

- Ability to pinpoint PD activity to within 10cm
- Ultrasonic and TEV sensors for surface and internal PD
- Factors in environmental conditions: temperature, atmospheric pressure and relative humidity
- Measures and records the severity of PD, for diagnostic analysis
- Works with cables and overhead assets
- Tough, weatherproof case, with built in 13 hour battery life
- Built in function checker for TEV and Ultrasonic
- USB data storage



Accessories and options



model	description	product code
UltraDish™	The UltraDish™ is ideal for investigating PD activity in overhead assets or at a distance. Includes carrying case	UD1
UltraTEV Locator Case	Protective carry case for main unit	UTL1-CAS
Flexible Sensor	Plug-in flexible microphone extension enables you to probe enclosures and tight spaces	FS1
RFCT	Clamp on current transformer for Cable PD	RFCT1
Probes	TEV/Ultrasonic Probe and TEV/Magnetic Probe	UTL1-P
Ultrasonic Contact Probe	Detects surface discharge activity in sealed chambers	UCP1
Battery Charger	Mains battery charger for the UltraTEV Locator™. Note: all mains-powered instruments are available with plugs to suit local requirements	UTL1-BC
Accessories Case	Carry case for main unit and accessories	UTL1-ACAS
Cables	Set of two 2 metre Probe cables (standard)	UTL1-C2
Cables	Set of two 4 metre Probe cables	UTL1-C4
Non Contact Temperature Probe		UTL1-TP
AC Ref. Source	Phase reference source	UTL1-AC
Extra Length Cables	Set of two 4 metre Probe cables	UTL1-C4
Rubber Boots		UTL-RB



PD Hawk™

Product Code: PDH1

Switchyard fault locator

Benefits

- Locates PD activity in all types of live open terminal switchgear components
- Filters out background emissions to eliminate false readings
- Safe
- Fast and accurate
- Easy to use

Features

- Rugged, design
- Ergonomic handle
- Menu-driven colour display
- Power/Gain control
- Menu/Tuning control
- Speaker
- Headphone jack
- Internal rechargeable battery input
- Charging indicator
- USB port
- Headphones
- Case



Note: all mains-powered instruments are available with plugs to suit local requirements.



Tuned for internal PD

The PD Hawk™ measures emissions in the 47 – 1000 MHz frequency range but is factory tuned to focus around 800MHz, which is typical of internal PD activity. This enables the operator to disregard non-PD emissions and eliminate false readings.

The operator can listen to emissions on the built-in speaker and/or over headphones and/or view them on menu-driven screens.

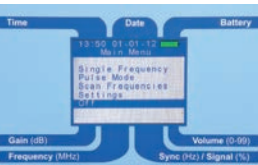


Frequency Magnitude Pulse timing

Fast and accurate

Rotating the PD Hawk™ while scanning helps locate the strongest signals from PD emissions

1. Switch on – the PD Hawk™ is instantly ready for action
2. Sweep the switchyard for radio emissions
3. Filter out irrelevant emissions e.g. mobile phone and television signals
4. Watch/listen to readings as they peak, to focus on the source of emissions
5. Use pulse mode to confirm emissions are PD
6. Note the severity and location of PD emissions
7. Rate the health of the asset and its risk of failure
8. Decide whether to investigate further and/or intervene



Versatile

The PD Hawk™ safely locates internal PD activity in switchyard assets including:

- Current Transformers (CT)
- Voltage Transformers (VT)
- Current Breakers
- Isolators
- Disconnectors

Accessories



Test Source

model	description	product code
Test Source	Confirms that the PD Hawk is functioning correctly	PD-TS1

Available subject to local regulations.

UltraTEV Alarm™

Continuous monitoring of substation switchgear

Product Code: UTA1 + UTAH

Identifies faults and safety issues BEFORE they lead to failures.

Benefits

- Early warning of faults prevents failures
- Enables timely interventions when maintenance is required
- Warns personnel if switchgear is in a dangerous condition
- Excellent cost/benefit justification

Features

- Effective continuous monitoring with both ultrasonic and TEV sensors
- Multi-node sensor units can monitor 100+ assets simultaneously
- Simultaneously measures local humidity and temperature conditions
- Central hub unit LED indicators provide immediate indication of PD problems
- Receive alerts anywhere, via email or text message

Additional info

- 85-264V AC 47-63Hz/120-375V DC



Accessories and options



Hub with GPRS Option



Hub Without GPRS



Additional Sensor Nodes



Ultrasonic Node



Short Microphone with Magnetic Base



Long Microphone with Magnetic Base



Close Coupled Ultrasonic Sensor



Alarm Node Calibration Checker



Portable 10 Node System Case

model	description	product code
Hub with GPRS Option	Receive condition alerts instantly via SMS text messages or email, with this GPRS enabled version of the hub. Measures local humidity and temperature conditions	UTAH-GPRS
Hub without GPRS	Volt-free contacts for optional SCADA connection	UTAH
Additional Sensor Nodes	Built in TEV sensor complete with airborne ultrasonic microphone	UTA1
Ultrasonic Node	Works directly with the Alarm Hub, monitoring ultrasonic PD emissions only. Can be daisy-chained	UTA-UN1
Short Microphone with Magnetic Base		UTA-SM
Long Microphone with Magnetic Base		UTA-LM
Close Coupled Ultrasonic Sensor		UTA-US
Alarm Node Calibration Checker™	Instantly checks that your Alarm Nodes are operating within specification	UTCC
Portable 10 Node System Case	Waterproof, robust, pull along case with foam inserts	UTA-CC

UltraTEV Monitor™

Complete asset monitoring and alarm system

Product Code: UTM

The most comprehensive Partial Discharge (PD) monitor ever developed.

Multiple assets

The web-enabled UltraTEV Monitor™ can support up to 25 nodes supporting up to 50 Ultrasonic and 50 TEV measuring points, depending which model is selected.

The modular nature of the system makes it equally suitable for large or small substations, continuously monitoring all types of MV and HV assets, including cables.

Multiple sensors

Each UltraTEV Monitor™ measurement node is capable of measuring PD activity and the environmental factors which affect it in FIVE ways:

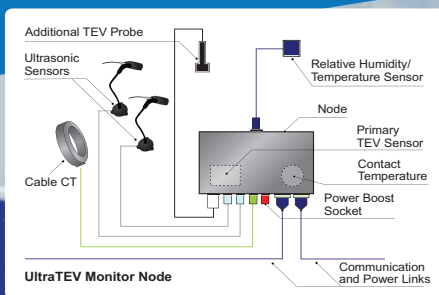
TEV	Built-in TEV sensor, plus additional plug-in TEV probe
Ultrasonic	Via plug-in external sensors
Temperature	Built-in contact sensor, plus plug-in external sensor
Humidity	Via plug-in external sensors
RFCT	Cables are monitored via plug-in Radio Frequency Current Transformer (RFCT)

Benefits

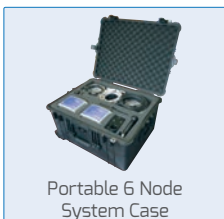
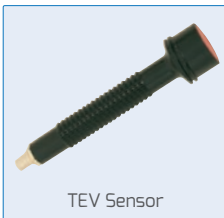
- Early identification of asset deterioration
- Measurement and analysis of PD activity to identify faults BEFORE they lead to failures
- Valuable information provided on the actual condition of assets
- More effective asset management, reliability, efficiency and safety, at lower cost

Features

- Detection – Continuously checks for the presence of PD activity on the surface and internal components and in cables
- Measurement – Uses time-of-flight measurement to a resolution of 1 ns (nanosecond) to locate the source of PD activity to within 60cm
- Monitoring – Monitors changes in PD activity over time, including noise, temperature and humidity to eliminate false readings
- Recording – Records PD activity in all assets being monitored over time



Accessories and options



model	description	product code
Node	UltraTEV Monitor additional node	UTMN
Environmental Sensor	Ambient temperature and relative humidity sensor	UTM1-ES
Aerial Kit	Aerial base and magnetic clamp for the UltraTEV Monitor™	UTM1-AK
Hub - Portable	Portable monitoring	UTM1-PH
RFCT	Clamp on current transformer for Cable PD	RFCT1
Hub - Wall Mounted	Permanent monitoring	UTM1-WH
UltraTEV Monitor Contact Probe	Detects surface discharge activity in sealed chambers	UCP2
TEV Sensor		TS-1
Ultrasonic Microphone		UTM1-UM
Magnetic Probe Base		UTM1-MB
Portable 6 Node System Case	Waterproof, robust, pull along case with foam inserts	UTM1-CC
Cable Tie Wrap Base		UTM1-TW

Contact Probes

Detecting surface discharge activity in sealed chambers

Designed for use with EA Technology's
PD instrumentation range

Ultrasonic Contact Probe™

Product Code: UCP1

Compatible with:

- UltraTEV Plus+™
- UltraTEV Locator™



UltraTEV Monitor Contact Probe™

Product Code: UCP2

Compatible with:

- UltraTEV Monitor™



Features

- Tuned for higher sensitivity to identify ultrasonic frequencies associated with surface discharge
- Robust construction for long life
- Magnetic mounting for hands-free use and eliminates noise caused by hand shaking
- Aids detection of surface discharge activity within sealed chambers by direct contact with the exterior metalwork with no need for air gaps
- Most sensitive equipment of its kind





PD Simulator™

Simulates TEV and ultrasonic signals

Product Code: PDS

The PD Simulator allows engineers to become familiar with the responses of their hand held instruments before being exposed to the live substation environment.

The PD Simulator realistically simulates Transient Earth Voltage (TEV) signals, similar to those generated by internal partial discharge, and ultrasonic signals similar to the signals associated with surface discharge.

Benefits

- Gives an appreciation of the difference between internal and surface discharge detection methods
- Assists familiarisation with the noise characteristics of ultrasonic surface PD activity
- Exposes personnel to measurable partial discharge as part of their training
- Partial Discharge training can be accomplished in a safe environment

Features

- Generates 5 levels of TEV signals
- Generates 5 levels of ultrasonic sound
- 4 modes of realistic ultrasonic noise available for each sound level
- 7 hours continuous use from fully charged battery
- Plug in lead with either magnet or 'crocodile' clip to transfer TEV signals to switchgear etc





PD Monitor GIS™

24/7 Partial Discharge (PD) monitoring system for gas insulated switchgear

For automatic, continuous monitoring of mission critical GIS assets.

Benefits

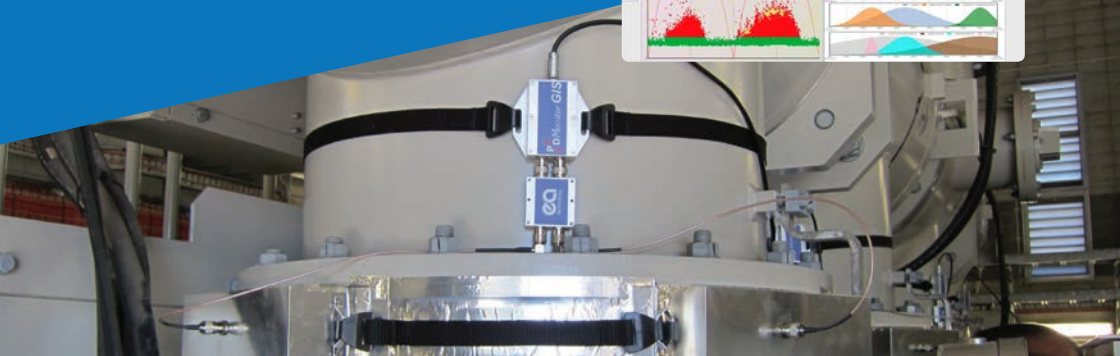
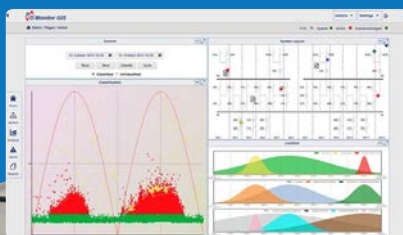
- Most cost effective and multi-featured GIS condition monitor available
- Continuous monitoring identifies PD faults before they lead to failures
- 24/7 assurance that critical GIS assets are not showing signs of PD
- Instantly alerts operators if PD faults are present
- Provides detailed information on PD fault location, severity and frequency
- Dramatically reduces the need for expensive technician call-outs
- New design based on 35+ years experience of PD detection and measurement
- Unique configuration requires minimal wiring

Features

- Accurately locates the source of PD activity
- Expert system software automatically provides detailed fault information without the need for analysis by experts
- Daisychain configuration minimises wiring and makes installation simple



The PD Monitor GIS™ continuously monitors PD activity via external sensors, which are daisy chained to an intelligent server.



PD Monitor GIS™

Gas Insulated Switchgear Monitoring System

Suitability

The PD Monitor GIS™ is purpose designed as a retrofit system for all commonly used pressurised EHV Gas Insulated Switchgear (GIS) equipment.

The modular system can cover over 100 sensor points, making it effective for a wide range of GIS assets.

Its unique 24/7 monitoring and diagnostic capabilities make it particularly suitable for monitoring mission critical substations on transmission networks.

Valuable Activity Data

- Shows PD activity by location, type, rate, magnitude and severity (magnitude + rate)
- Plots PD activity as easy-to-read graphs
- PD activity alert thresholds are user-configurable



PD Locator™

Product Code: PDL1



The PD Locator™ includes a FREE Function Checker, which automatically tests functions, accuracy and timing.

An effective instrument for rapidly detecting, measuring and locating the source of PD activity with pinpoint accuracy.

Benefits

- Essential equipment for power engineers
- Locate faults before they lead to failures
- Quantify PD activity
- Use with the PD Monitor™ for detailed assessment of asset condition
- Ability to detect multiple PD sources

Features

- Measures PD activity accurately in single probe mode
- Quickly locates the source of PD activity in two-probe mode
- Portable and easy to use
- Includes Function Checker, probes, battery charger and case

Note: all mains-powered instruments are available with plugs to suit local requirements.

A technician wearing a high-visibility orange and blue safety jacket is using the PD Locator instrument. The technician is holding a probe against a metal power cabinet. The PD Locator is visible in the background, resting on a surface.

LOCATES PD ACTIVITY
ACCURATELY AND QUICKLY

Accessories and options



PD Locator™ Case



PD Locator™
Accessories Case



PD Locator™ Probe (x1)



PD Locator™ 5mm
N Type Coax Cables (x2)



PD Locator™
Function Checker



PD Locator™
Battery Charger

model	description	product code
PD Locator™ Case	Dedicated case for the PD Locator™	PDL1-CC
PD Locator™ Accessories Case	Dedicated accessories carry case for the PD Locator™	PDL1-ACC
PD Locator™ Probe (x1)		PDL1-P
PD Locator™ 5mm N Type Coax Cables (x2)	Can be used as an upgrade from older type 25mm cables	PDL1-CSN
Cables	Set of two 2 metre cables (standard)	PDL1-CSN2
Cables	Set of two 4 metre cables	PDL1-CSN4
PD Locator™ Function Checker	Automatically tests the instrument's functions, accuracy and timing	PDL1-FC
PD Locator™ Battery Charger	Mains battery charger for the PD Locator™. Note: all mains-powered instruments are available with plugs to suit local requirements	PDL-BC

PD Monitor™

Product Code: PDM03CF



Monitors, records, locates and analyses changes in PD activity over time, using 12 probes. An extremely valuable condition assessment tool.

Benefits

- Non-intrusive monitoring means no lost production
- Effectively screens out external interference using full 12 channel precedence detection
- Records PD variations caused by changes in the operating environment over time
- User-friendly analytical software provides essential management information
- Optional downloading via modem – for expert analysis by EA Technology

Features

- Continuously monitors up to 12 locations simultaneously, using Precedence Detection technology
- Remote data access capabilities, plus data storage on CompactFlash® card
- Includes standard PC data analysis software, remote access modem, probes, aerials and carrying case
- Portable and easy to deploy



Accessories and options



PD Monitor™ Flight Case



PD Monitor™ Aerial



TEV Sensor



PD Monitor™ Magnetic Clamp



PD Monitor™ Aerial Base



PD Monitor™ Set of 15m Cables x12



PD Monitor™ Tie Wrap Clamp



USB Card Reader for PC



Test Cable



CompactFlash® Upgrade



PD Monitor™ Accessory Kit

model	description	product code
PD Monitor™ Flight Case	Dedicated flight case for the PD Monitor™	PDM03-CC
PD Monitor™ Aerial		PDM03-A
TEV Sensor		TS-1
PD Monitor™ Magnetic Clamp		PDM03-MC
PD Monitor™ Aerial Base		PDM03-AB
PD Monitor™ Set of 15m Cables x12		PDM03-15C
PD Monitor™ Tie Wrap Clamp		PDM03-TWC
USB Card Reader for PC	Plus CompactFlash® Cards x2	PDM03-USBCR
Test Cable		PDM03-TC
CompactFlash® Upgrade	Full upgrade to latest PD Monitor™ specification, including CompactFlash® data storage	PDM03-CFU
PD Monitor™ Accessory Kit	Probes x8, Aerials with bases x4, Magnetic clamp x12, Tie wrap clamp x4, 15m cables x12, USB Card Reader x1, CompactFlash® cards x2, Test cable x1, Accessories case x1	PDM03-KIT



CableData™ Collector

Product Code: CDC2

Online cable testing system

Benefits

- Identifies cable defects before they fail
- Does not require a cable outage
- Quick, safe and non-destructive
- Expert cable condition analysis and reports



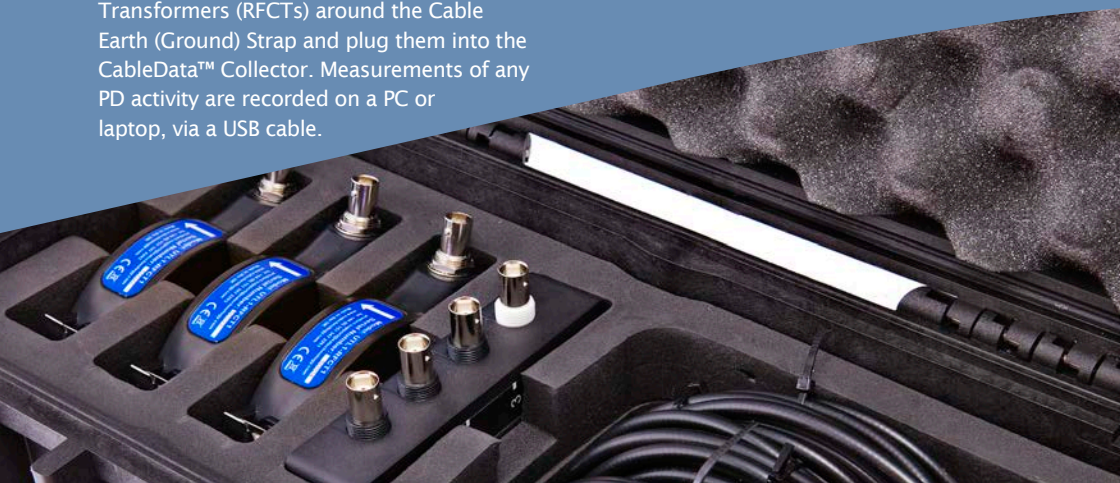
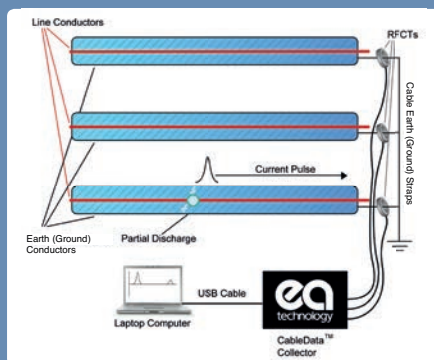
Features

- Detects and measures Partial Discharge (PD) activity in single and three phase cables
- Works with all insulated cable types over distances up to several kilometres
- Small, robust, portable and easy to use

How it works

The CableData™ Collector detects and quantifies PD activity in live distribution cables by measuring radio frequency currents which are produced when discharges occur.

Simply clip the Radio Frequency Current Transformers (RFCTs) around the Cable Earth (Ground) Strap and plug them into the CableData™ Collector. Measurements of any PD activity are recorded on a PC or laptop, via a USB cable.

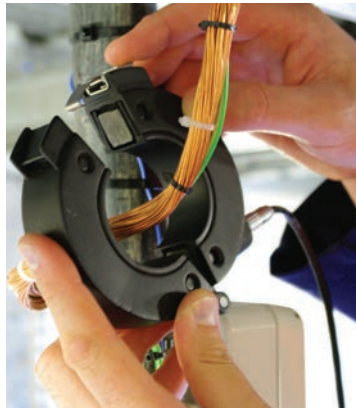


Cable Data™ Analysis Studio

The CableData™ Analysis Studio provides a fully graphical view of the data collected using the CableData™ Collector. Clustering functions within the software automatically categorise events into related groups to further simplify analysis. The CableData™ Analysis Studio provides the ability to map a discharge to its location along the length of the cable¹. Once the analysis is complete, the integrated report generation feature allows a full report detailing all findings to be automatically generated.

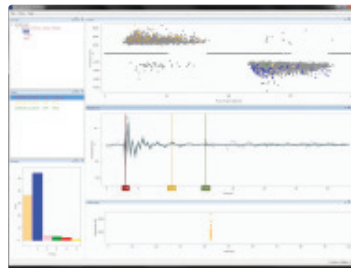
Benefits

- Using the software yourself, view data in detail through interactive charts and filtering options for fast identification of Partial Discharge
- Analyse data at your desktop with access to previously unavailable insights into cable condition which can be viewed immediately, providing faster data analysis
- The CableData™ Analysis Studio provides the ability to analyse data collected away from the site under investigation. (If software license has been purchased)
- Custom reporting facilities providing the ability to export reports from CableData™ Analysis Studio to assist in asset management profiling

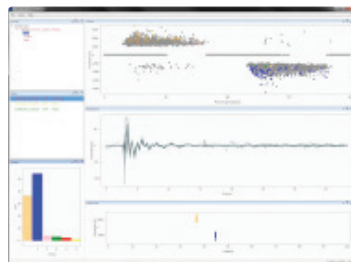


Features

- Built in report generation tool allows reports to be created from imported data
- Microsoft Windows application supporting Windows 7 and 8
- Displays Waveform and Phase Resolve Event data on interactive charts
- Phase Resolved Event views and Waveform views allow for full analysis of the data



Cable Mapping



Normal Window

¹Where cable mapping is applicable



CableSniffer™

Finds underground cable faults FAST

Product Code: CS1

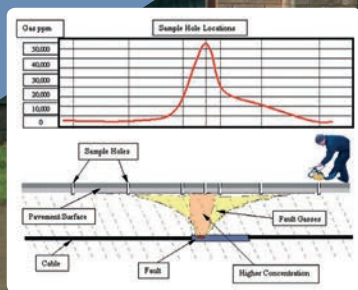
Locate underground LV faults in minutes, with fewer excavations, less disruption and lower costs.

Benefits

- Rapid results save time and money
- Fewer holes – so less disruption and reinstatement
- Improved customer service – faults fixed more quickly
- Excellent return on investment – typically pays for itself in days

Features

- Locates faults on all LV power cables
- Accurate to within 1 metre
- Lightweight, portable and easy to use
- Includes sensor probes, spare filter papers, battery charger and carry case





model	product code	model	product code
CableSniffer™ Searcher Bar System	CS1-SBS	In-Line Filter Assembly	CS1-FA2
CableSniffer™ Drill System	CS1-DS	Foam Pack x100	CS1-F
Dual Supply Battery Charger. Note: all mains-powered instruments are available with plugs to suit local requirements	CS1-BC	Sensor Straws x10	CS1-SS
Filter Paper x10 Plus 'O' Ring for use with CS1-FA	CS1-FP	Sensor Straw Adaptor	CS1-SSA
25cm Searcher Bar	CS1-SB	8mm SDS Drill Bits x5	CS1-DBIT
CableSniffer™ Case	CS1-CC	Connector Hose	CS1-CH
Top Hat Adaptor	CS1-THA	Filter Kit for use with CS1-FA2	CS1-FK
Tar Plugs x100	CS1-TP	CableSniffer™ Drill System Accessories Kit	CS1-DSAK
Drill Extension Bar	CS1-DE	Includes: SDS drill extension bar x 1, Mastic dispenser gun x 1	
Black Mastic Cartridge	CS1-BM	CableSniffer™ Drill System 10 Fault Consumables Kit	CS1-DSCK
Mastic Dispenser Nozzles x20	CS1-DN	Includes: Sensor Straws x10, Filter Papers x10, Mastic Dispenser, Nozzle x10, 8 x 200mm SDS drill bits x5, Black Mastic Cartridges x1, Foam Pack x1, 'O' Rings x1	

PURL™

The Pole Ultrasonic Rot Locator

Product Code: PURL

Take the guesswork out of measuring rot in pine poles and estimating their residual strength.

Benefits

- Simple and quick to use
- Compatible with field data gathering equipment
- Accurate condition assessment replaces guesswork
- Essential for network reliability and safety

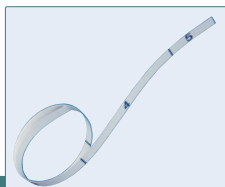
Features

- Proven ultrasonic technology with minimal intrusion into pole
- Software maps internal rot and calculates pole strength
- Rugged battery-operated construction
- Includes transmitter, receiver, tape measure, elastic ropes and carry case

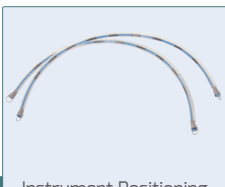
TRIED AND TESTED
IN THE FIELD



Accessories and options



Power Setting Tape



Instrument Positioning Straps x2



PURL™ Analytical Software CD



PURL™ Carry Case



model	product code
Power Setting Tape	PURL-PST
Instrument Positioning Straps x2	PURL-IPS
PURL™ Analytical Software CD	PURL-ASCD
PURL™ Carry Case	PURL-CC



Polarity Test Kit™

LV live conductor test kit
The safest way to check which conductors are live

Product Code: PTK1

The Polarity Test Pen™ works by lighting up and buzzing when it detects the electrical field surrounding the live core of a conductor.

- Lights up ONLY within 3mm of the live core of a standard 3mm conductor
- Discriminates between live and non-live conductors – even in bundles of cables
- Does not require current flow in the live conductor
- Works with all standard 220-250V 50/60Hz supplies
- Daylight LED illumination
- Audible buzzer
- Rugged construction, with pen-style pocket clip
- Uses 2 x AAA standard batteries included
- Range of body colours – can be overprinted with your company logo



Test Pen Checker™

Product Code: TPC1

The Test Pen Checker™ instantly confirms whether the Polarity Test Pen™ is functioning correctly. It works by simulating the field produced by a live LV conductor.

- Instant function check

STEP 1 - Insert the Polarity Test Pen™ into the Test Pen Checker™. The unit automatically powers up and its test light illuminates

STEP 2 - Polarity Test Pen™ tip lights up and buzzer sounds to confirm correct functioning

STEP 3 - Remove Polarity Test Pen™ from unit and check for live conductors

STEP 4 - Retest the Test Pen™ to ensure correct operation for 100% confidence

- Self powered and portable

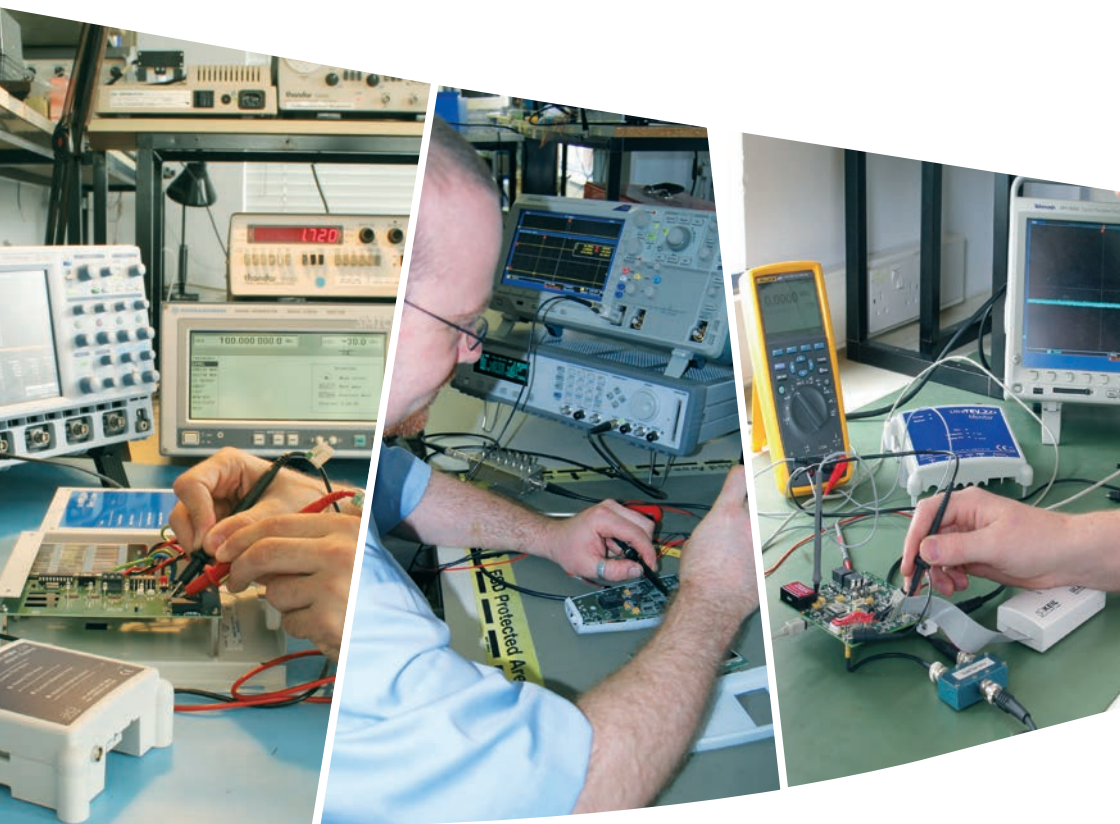
- Maintenance free battery

- Rugged construction protects your Polarity Test Pen™ when not in use

- Clip on Lanyard



Repair and Calibration Service



As a manufacturer of measurement and detection instruments, it is important for EA Technology to provide the best quality service for our products. Maintain your EA Technology instruments to keep them in perfect working conditions with the knowledge of our skilled technicians.

The Services Catalogue



With an unparalleled technical heritage, EA Technology's Power Skills Centre is uniquely positioned to provide training to meet the needs of the power industry.

EA Technology has been at the forefront of driving innovation within the industry and improving network performance for nearly five decades. This practical experience and knowledge underpins our training provision and ensures the optimum balance between theoretical understanding and practical application.

We offer one of the most extensive ranges of specialist, power engineering courses available to professionals working within the industry. We can also provide tailored training courses and modular workforce development programmes. These expert-led programmes offer structured development routes for a range of power engineering roles and can be customised to meet the specific training requirements of particular groups and competence levels.

Our training provision has been externally assured as complying with the highest standards in the field. We are a National Skills Academy for Power assured Education and Skills Provider and an Institute of Asset Management approved training supplier. We are an accredited member of the Continuing Professional Development Certification Service ensuring our courses can count towards CPD requirements.

Workforce Development Programmes:

Flexible development routes that can be tailored to role specific and organisational requirements

core module index
1 Power Industry Foundation
2 Substations, Switchgear and Transformers
3 Overhead Lines
4 Cables Technology
5 Network Planning & Design
6 Power System Protection
7 Earthing
8 Distributed Generation
9 Project Management

Course listing

Course index by category

Substations Courses

Gas insulated switchgear and GIS substation essentials

Insulating oil handling and analysis course

Partial discharge (PD) training

SF₆ training and certification

Substation design - a practical guide

Substation earthing course

Switchgear technology for power systems

Transformers for power systems

Cables Technology Courses

Cable joints, terminations and accessories

Cables for power systems (Part 1)

Cables for power systems (Part 2)

Oil-filled cable systems

Power cable fault location

Power Networks Courses

Application of variable speed drives and rotating machines

Distributed generation

Distribution overhead lines

Distribution planning (Part 1)

Distribution planning (Part 2)

Network planning foundation course

Stability and voltage control in electrical power networks

Wind farms - a project manager's guide to the electrical aspects

Protection Courses

Commissioning and testing

Power system protection (Part 1)

Power system protection (Part 2)

Specialist Courses

Engineering recommendation G5/4 and power quality workshop

The essentials of Asset Management

PAS 55 to ISO 55000: Are you ready?

Power systems for private network operators

Electrical safety conference - safe working practices

Failure analysis and investigation

Impacts of low carbon technologies on networks

Introduction to smart grids

Lightning protection - for MOD sites with explosives facilities

ISO 55000: The route to effective asset management

Power systems engineering

Project management - managing electrical projects

Regulation: what it means for a distribution network operator

Understanding lightning protection

Where to buy worldwide

Country Contact

Argentina	Artec Ingenieria S.A. Buenos Aires, Argentina	contact website	Ms Maria Gomez Blanco www.artec-ingenieria.com	email phone	egb@artecing.com +5411 4106 6500
Australia*	EA Technology Australia Queensland, Australia	contact website	Mr Neil Davies www.eatechnology.com.au	email phone	neil.davies@eatechnology.com.au +61 (0)7 3257 3096
Belarus	UAB Ekobana LT-11202, Vilnius, Lithuania	contact website	Ms Ruslana Komaristova www.ekobana.lt	email phone	ruslana@ekobana.lt +370 5 249 18 04
Belgium	Control and Protection NV Wilrijk, Belgium	contact website	Mr Paul de Graef www.conpro.be	email phone	paul.de.graef@conpro.be +32 3 829 0335
Brazil	Bohnen+Messtek Importação e Comércio Equipamentos Ltda São Paulo, Brazil	contact website	Mr Reinaldo Bohnen www.bohnen.com.br	email phone	reinaldo@bohnen.com.br +55 11 2711-0050
Canada (Western)	MultiSource Inc Alberta, Canada	contact website	Mr Wayne Hartwick www.multisource.ca	email phone	wayne@multisource.ca +1 403 291 1500
Canada (Eastern)	Spectrum Instruments Ltd Brighton, Canada	contact website	Mr Allan Fitzgerald www.spectrum-instruments.com	email phone	spectruminfo@cogeco.ca +1 613 439 8767
China*	EA Technology China Shanghai, China	contact website	Dr Yuan Tian www.eatechnology.cn	email phone	chinaoffice@eatechnology.com +86 (0)21 5174 8848
Czech Republic	TMV SS Praha, Czech Republic	contact website	Mr Vaclav Straka www.tmvss.cz	email phone	vaclav.straka@tmvss.cz +420 272 942 720
Denmark	DESITEK A/S Søndersø, Denmark	contact website	Mr Jens A. Møller www.desitek.dk	email phone	jam@desitek.dk +45 638932103
Egypt	Accurate Electrical Contracting, Alexandria, Egypt	contact website	Mr Moataz Mohamed ElMahdy	email phone	moataz.elmahdy@accurate-elec.net +20 03 54 63 194
Finland	Multirel Oy Espoo, Finland	contact website	Mr Andre Arte www.multirel.fi	email phone	anders.arte@multirel.fi +358 9 819 063 0
India	East West Trading International Private Limited, Mumbai, India	contact website	Mr R. K. Chhatwani	email phone	ewindia@ewi-intl.com +91 22 2852 7633
India	Hi Tech Systems and Services Kolkata, India	contact website	Mr. Akash Das www.hitech.in	email phone	akash@hitech.in +91 674 325 6465
Indonesia	PT. MTS Indonesia Tanah Abang, Central Jakarta 10210, Indonesia	contact website	Cailendra Gautama www.mts-indonesia.com	email phone	cailendr@mts-indonesia.com +62 21 5704200
Ireland	Powerpoint Engineering Ltd Unit 5b Clonminam Business Park, County Laoise, Ireland	contact website	Mr Garrett Kelly www.powerpoint-engineering.com	email phone	info@powerpoint.ie +353 5786 62162
Italy	Ampere SpA Milano, Italy	contact website	Roberto Picker www.amperespa.it	email phone	roberto.picker@amperespa.it +39 02 67849 242
Korea	Dae Young Gyeonggi-Do, Korea	contact website	Mr Dae-bok Kim www.daeyoungelect.co.kr	email phone	daebkim@hanmail.net +82 31 426 7950
Lithuania	UAB Ekobana LT-11202, Vilnius, Lithuania	contact website	Ms Ruslana Komaristova www.ekobana.lt	email phone	ruslana@ekobana.lt +370 5 249 18 04
Luxembourg	Control and Protection NV Wilrijk, Belgium	contact website	Mr Paul de Graef www.conpro.be	email phone	paul.de.graef@conpro.be +32 3 829 0335
Malaysia	LC Engineering Services SDN BHD, Selangor D.E, Malaysia	contact website	Mr Lee Mun Woh www.lceng.com	email phone	lmw@lceng.com +603 79581022

Country Contact

México	Allectro. S.A. Col. Portales, Mexico	contact website	Ms Martha León Mosiño www.allectro.com	email phone	martha.leonm@allectro.com +52 55 56016213
Netherlands	Control and Protection NV Wilrijk, Belgium	contact website	Mr Paul de Graef www.conpro.be	email phone	paul.de.graef@conpro.be +32 3 829 0335
New Zealand	HV Diagnostics Christchurch, New Zealand	contact website	Mr Greg Linton www.hvds.co.nz	email phone	glinton@hvds.co.nz +643 962 0225
Norway	CEE Energiteknikk as Lørenskog, Norway	contact website	Svein Ivar Weideborg www.cee.no	email phone	svein.weideborg@cee.no +47 6791 1950
Peru	Logytec S.R.L. Isidoro Suarez #219 San Miguel, Lima-Peru	contact website	Mr Rafael Ruiz www.logytec.com.pe	email phone	rafaelruiz@logytec.com.pe +511 4523111
Philippines	InfoBahn Communications, Inc. Quezon City, Philippines	contact website	Mr Joel John I. Bautista www.ibahn.net	email phone	jjib@ibahn.net.ph +632 9138888
Portugal	MVA-Electrotécnica, Lda. Carnaxide, Portugal	contact website	Mr Rui Marques www.ibahn.net	email phone	www.mva.pt +351 21 4879000
Qatar	Al Hamad Trading Est. Doha, Qatar	contact website	Mr Manoj Megchiani www.alhamadtrading.com	email phone	manoj@alhamadtrading.com +974 46 88 220
Oman	Orbital Projects and Services LLC. Muscat, Oman	contact website	Ajith Mathew www.orbitalgrp.com	email phone	ajith@orbitalgrp.com +968 24481397
Saudi Arabia	AMPS Al-Khobar, Saudi Arabia	contact website	Mr Abdul Kader amps-wll.com	email phone	abdulkader.ismael@amps-wll.com +966 3 8876863
Singapore*	EA Technology Asset Management Pte Ltd Singapore	contact website	Mr Victor Chan www.eatechnology.sg	email phone	Victor.Chan@eatechnology.sg +65 6634 3591
South Africa	Independent Power Industries Johannesburg, South Africa	contact website	Mr Fernando Bolota www.ipiholdings.com	email phone	fred@ipiholdings.co.za +27 (0) 11 432 6958
Spain	Drilco sa Madrid, Spain	contact website	Mr Carlos Cañellas www.drilco.net	email phone	carlos.canyellas@drilco.net +34 916 591 900
Taiwan	Wavetronic Taipei County, Taiwan	contact website	Mr Bill Chiang www.wavetronic.com	email phone	mason@wavetronic.com.tw +886 2 2943 7480
Thailand	TMEAS Co Ltd, 12/5 Moo 4, Bangbuathong, Nonthaburi, Thailand	contact website	Mr Thanakorn Mapaisansin	email phone	support@tmeas.co.th ++66 02 930 8109
Turkey	Testone Teknoloji Cozumleri Istanbul, Turkey	contact website	Mr Hilmi Temiz www.testone.com.tr	email phone	hilmit@testone.com.tr +90 212 237 8668
UAE*	EA Technology Middle East Abu Dhabi, UAE	contact website	Mr Alan Preece www.eatechnology.com	email phone	alan.preece@eatechnology.com +971 (2) 650 3629
UAE	Euro Mechanical and Electrical Contracting Co. LLC Abu Dhabi, UAE	contact website	Mr Dhaval Dholia www.euromechanical.com	email phone	dhaval@euromechanical.com +97 12678 1133
United Kingdom*	EA Technology Capenhurst, Chester	contact website	Mrs Janice Mckay www.eatechnology.com	email phone	sales@eatechnology.com +44 (0)151 339 4181
USA*	EA Technology – 400 Morris Avenue, Suite 240 Denville, NJ 07834	contact website	Bill Higinbotham www.eatechnologyusa.com	email phone	bill.higinbotham@eatechnologyusa.com +1 (862) 261-2759
Vietnam	VPower JSC Ho Chi Minh City	contact website	Mr Tran Dinh Xuan www.vpower.com.vn	email phone	xuan.tran@vpower.com.vn +84 8 2247 8343

*EA Technology office



+44 151 339 4181



sales@eatechnology.com

Extend your
warranty
for free!

Register your product by emailing our Product Support Team at:

product-support@eatechnology.com

with product, serial number, name, company, address, postcode and email address

All registered instruments will receive an additional 12 months warranty for FREE

 +44 (0) 151 339 4181  **sales@eatechnology.com**

Global footprint

We provide products, services and support for customers in 90 countries, through our offices in Australia, China, Europe, Singapore, UAE and USA, together with more than 40 distribution partners.



Our expertise

We provide world-leading asset management solutions for power plant and networks. Our customers include electricity generation, transmission and distribution companies, together with major power plant operators in the private and public sectors.

Safer, Stronger,
Smarter Networks

www.eatechnology.com

Australia | China | Europe | Singapore | UAE | USA

Main reception: +44 (0) 151 339 4181
EA Technology, Capenhurst Technology Park
Capenhurst, Chester, CH1 6ES, United Kingdom

blanblan@design12476
MKTSCOMM522-UK01